

1. SGS TEST REPORT FOR ROHS on Vincenc News week 18 Of 2005. Please kindly download when needec

ABOUT US

COMPANY PROFILE

1. ABOUT VINCENC

Establishment :

Head office : In Taipei on OCT. 21, 1992

China Factories :

Tsingtao Factory : In Mar., 1990

Yangzhou Factory : In May, 1999

Singapore Office : In Nov., 1992

Main Products : Rectifieres, LED, & Varistor Capacity of Factories :

1A (DO-41)	50KKPCS / Month
3A (DO-201AD)	10KKPCS / Month
WOB (1A, 1.5A, 2A)	5KKPCS / Month
KBP (1A, 1.5A, 2A)	100KKPCS / Month
KBL (4A)	200KKPCS / Month
KBU (6A, 8A, 10A)	200KKPCS / Month
KBPC (3A, 6A, 8A)	200KKPCS / Month
KBPC (15A / 25A / 35A / 50A)	100KKPCS / Month
LED	100KKPCS/Month
Display	10KKPCS / Month
Varistor	40KKPCS / Month

New Developed Products : SMD Type

Distributers :

ITALY Distributor : PIHER INTERNATIONAL ITALIANA S.r.l.

Greece Distributor : DION GIANNIKOS & CO

Austria Distributor : CODICO WARENHANDELS GES. M.B.H. & CO. KG.

Russia : Ecocity LTD.

國內代理銷售：晶舟有限公司

TEL : 02 29540717

FAX : 02 29540966

e-mail : chingt@ms3.hinet.net

MR. 戴 / MR.唐

2. COMPANY INFORMATION

Paid Capital :

Head Office : NTD18,000,000.00

Singapore Office : USD150,000.00

China Factories : USD3,500,000.00

Employees :

Head Office : 8

Singapore Office : 32

China Factories : 3600

Area of Offices & Factories :

Head Office : 180 Square Meters
Singapore Office : 350 Square Meters
Tsingtao Factory : 1653 Square Meters
Yangzhou Factory : 2855 Square Meters

Sales Volume :

Head Office : USD500,000.00 / Month
Singapore Office : USD300,000.00 / Month

Contact Information :

Head office :
9F-2, NO. 7, LANE 35, SEC. 2, SAN-MIN RD., PANCHIAO CITY,
TAIPEI HSIEN, TAIWAN, R.O.C.
Tel: 886-2-2964 7629 (Rep.)
Fax : 886-2-2964 7641
e-mail : vincenc@seed.net.tw

Singapore Office :

NO. 63, HILLVIEW AVENUE LAM SOON INDUSTRIAL BUILDING #104
SINGAPORE 669569
TEL : 65-67630 921 / 67630 489 / 67635 493
FAX : 65-67632483
e-mail : accent22@cyberway.com.sg

Certification :

UL : 197860
CSA : 215761
VDE : 5003446-4790-0001

3. COMPANY PROFILE

Download here ▶



↑TOP

Head office

9F-2, NO. 7, LANE 35, SEC. 2, SAN-MIN RD.,
PANCHIAO CITY,
TAIPEI HSIEN, TAIWAN, R.O.C.
TEL: 886-2-2964 7629 (Rep.)
FAX : 886-2-2964 7641
E-mail : vincenc@seed.net.tw

Singapore Office

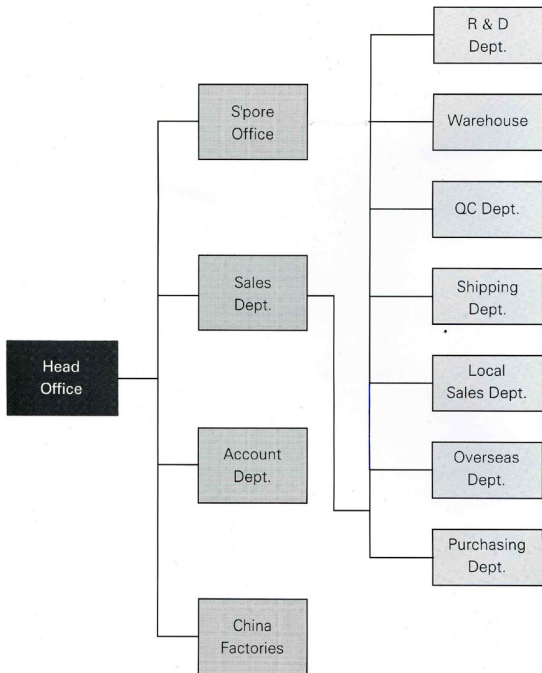
NO. 63, HILLVIEW AVENUE LAM SOON
INDUSTRIAL BUILDING #104
SINGAPORE 669569
TEL : 65-67630 921 / 67630 489 / 67635 493
FAX : 65-67632483
E-mail : accent22@cyberway.com.sg

DESIGN BY JULYINFO.

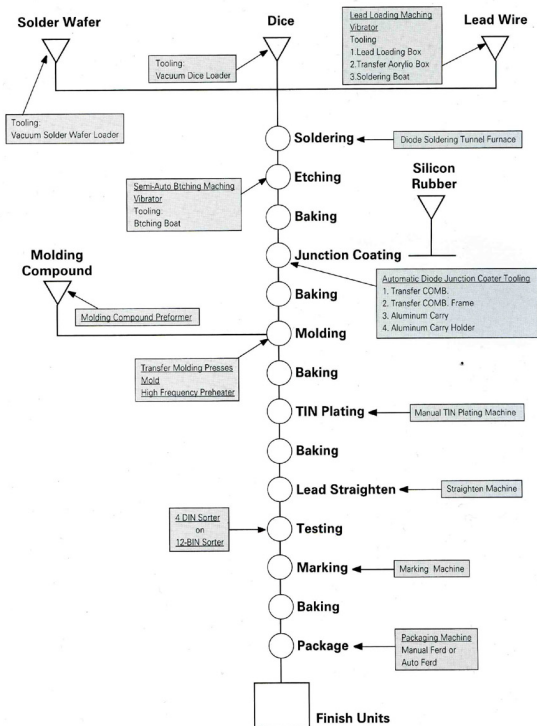
2004 (C) VINCENC HOME DEVELOPMENT CO., LTD. COPYRIGHT ALL RIGHTS RESERVED.



3. ORGANIZATION CHART:



RECTIFIERS PRODUCTION FLOW CHART

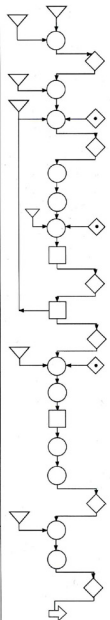


LED LAMP PRODUCTION FLOW CHART

Materials	Flow	Q.C.	Process	Facilities
Lead Frame Silver Epoxy		-	Silver Epoxy Dipping	Auto System or Manual
LED Chip		Monitor	Die Mount	Auto System or Manual
		L/A	-	Microscope
		-	Curing	Oven
Gold Wire		Monitor	Bonding	Auto System or Manual
		-	Inspection	Microscope
		L/A	-	Microscope
Epoxy Resin		Monitor	Encapsulation	Auto System or Manual
		-	Curing	Oven
		-	Tie Bar	Hydraulic Press
		-	Testing and Classification	Auto System or Manual
		L/A	-	Testing Fixture and V/M Inspection
Packing Material		-	Packing	Labour
		-	UTS	Ware House
		Q.A.	-	Photo Cell, Projector and other equipment
		-	Shipping	Truck / Air / Sea



DIGIT DISPLAY PRODUCTION FLOW CHART

Materials	Flow	Q.C.	Process	Facilities
P.C.B. Pin		-	Pin Soldering	Manual
		L/A	-	Microscope
Silver Epoxy		-	Silver Epoxy Dipping	Auto System or Manual
LED Chip		Monitor	Die Mount	Auto System or Manual
		L/A	-	Microscope
		-	Curing	Oven
		-	Ultra Sonic Cleaning	Ultra Sonic Cleaner
Al Wire		Monitor	Bonding	Auto System or Manual
		-	Inspection	Microscope
		L/A	-	Microscope
		-	In-Line Test	Testing Fixture
		L/A	-	Testing Fixture
Reflector Epoxy Resin		Monitor	Encapsulation	Microscope
		-	Curing	Oven
		-	V/M Inspection	Manual
		-	Testing and Classification	Auto System or Manual
		-	Marking	Stamp and Ink
		L/A	-	Manual
Packing Material		-	Packing	Manual
		-	UTS	Ware House
		L/A	-	Photo Cell and other Equipment
		-	Shipping	Truck / Air / Sea

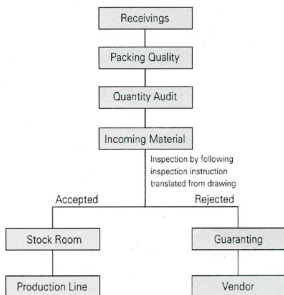


VARISTOR FLOW CHART

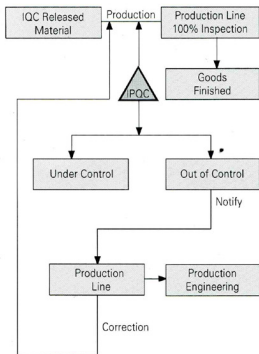
Step	Method	Tools
1. I.Q.C	Experimental testing	Furnace
2. Formula	Weight	Standard-weight
3. Ball-milling	Viscosity	V-meter
4. Spray-drying	Flow rate: Humidity	Angle-testor;Furnace
5. Forming	Weight;Thickness	Scale;mm-Meter
6. Sintering	Temperature;Time	Controller
7. Electrode	Conductivity;Solderability	Surge-tester;Soldering
8. Sorting	Voltage	Multimeter;Resistor
9. Assembly	Figure;Marking	Eyes;Meter
10. Testing	Voltage	Multimeter;Resistor

ACTIVE QUALITY CONTROL

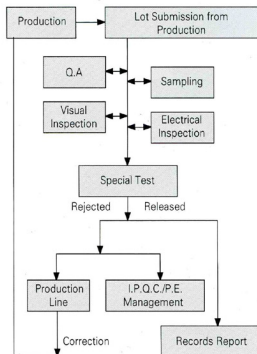
Material Flow Chart of I.Q.C



Process Flow Chart of I.P.Q.C.

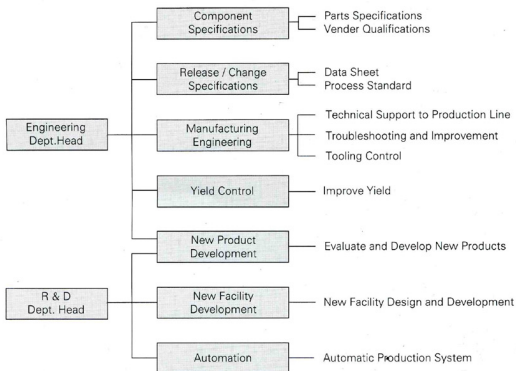


Functions of Q. A.



DYNAMIC ENGINEERING, RESEARCH AND DEVELOPMENT

■ Engineering / R & D Dept. Organization Chart



■ Equipments

• Beam Pattern Measurement System

————— Measuring The Viewing Angle

• Electro Luminescence System

————— Measuring The Spectral Characteristics

• L-1 Measurement System

————— Measuring The Relative Relationship Between
The Luminous Intensity and Current

• Electrical Character Measurement System

————— Measuring IV, CV

• Chip Parameter Analysis System

————— Measuring The Parameter of Each Chip in A Wafer,
As The Reference for Even Intensity

• Viscometer

————— Viscosity Measurement

• Luminous Intensity Measurement System

————— Measuring The Intensity



RELIABILITY TEST

■ Test Items VS. VINCENC Specifications

- Solderability

----- QC - A - 002

- Soldering Heat Resistance

----- QC - A - 003

- Temperature Cycle

----- QC - A - 004

- Life Test

----- QC - A - 005

- Lead Tension Strength

----- QC - A - 006

- Solvent Resistance

----- QC - A - 007

- Low Temperature

----- QC - A - 008

- High Temperature

----- QC - A - 009

- High Temperature /
High Humidity

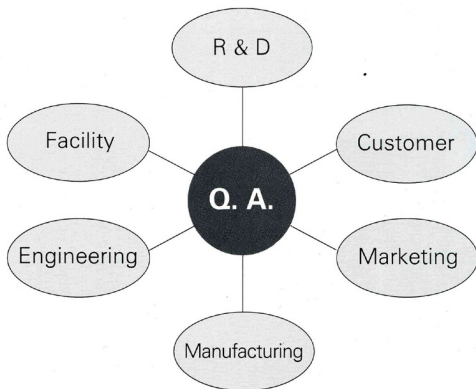
----- QC - A - 011

- Vibration Test

----- QC - A - 012

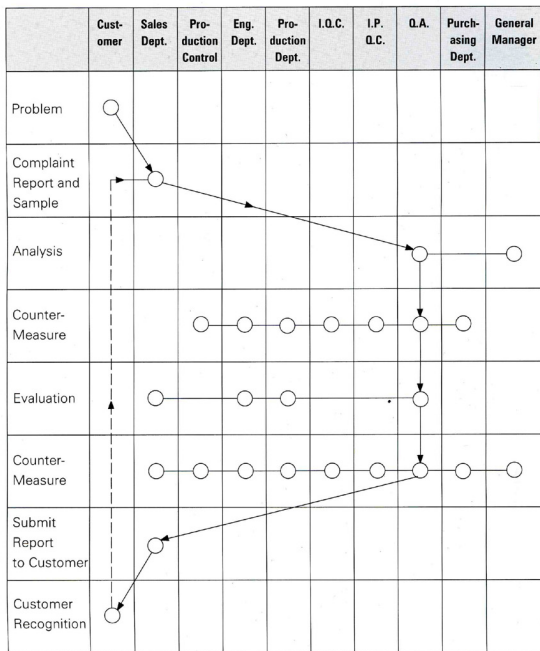
- High Temperature Bias

----- QC - A - 013



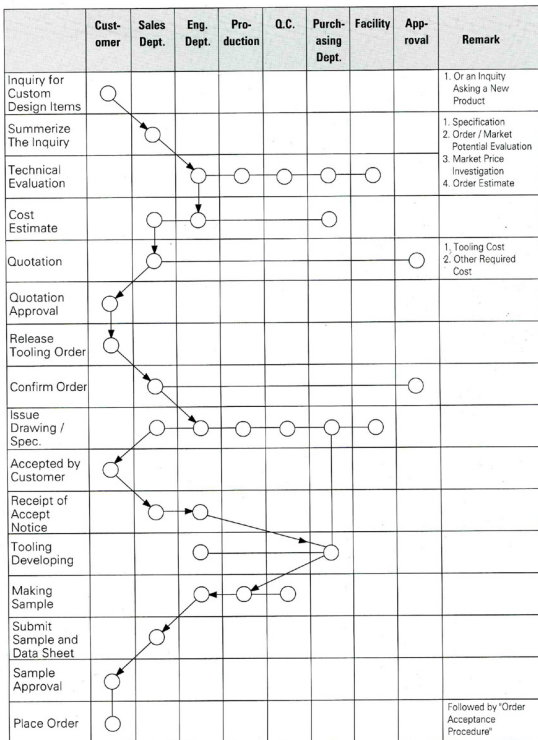


DISPOSAL OF QUALITY PROBLEM



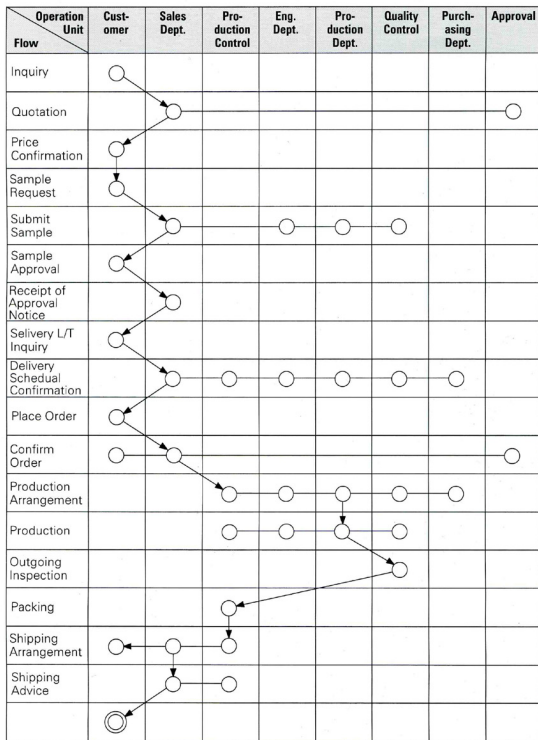


CUSTOMER DESIGN PROCEDURE





ORDER ACCEPTANCE PROCEDURE



DIVERSIFIED EDUCATION AND TRAINING SYSTEM

Education and Training System

